



Manufacturing Plant

Distribution Center with stock

INNOVATIVE LCD DIGITAL SIGNAGE CATALOGUE



LEAROY LED

LED specialists since 2009.

Based in Shenzhen, China, with a manufacturing plant of 23.000 square meters, we have an international sales department in Madrid, Spain.

This way, and thanks to our wide experience over 10.000 installations worldwide, we develop customized projects with european quality standards at competitive prices. We accompany customers designing specific projects with the best solutions and giving technical support during the entire product service life.

Our Mission is providing with the most innovative LED and LCD displays.



SHENZHEN CENTER



Our
VALUES



INNOVATION



COMMITMENT



EFFICIENCY

TO SERIES

LCD Totems

Wide Viewing Angle
Indoor and Outdoor
Optional Touch Screen



TO-I SERIES

Indoor LCD Totem



1080p HD
FHD quality image



1000:1
High contrast



21 mm
Ultra-thin screen



178°
Wide viewing angle

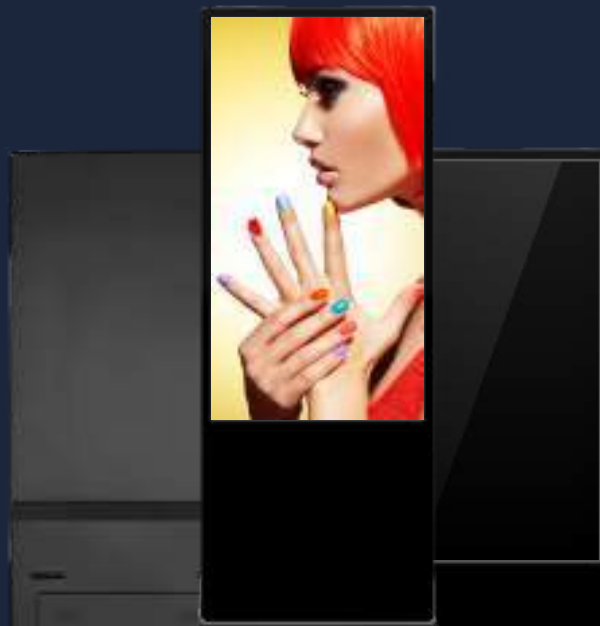


10 touch points*
Sensitive and fast



50.000 hours
Long service life

*Touch function is optional



Variety of sizes
43" to 100"

Ultra-thin screen box
21 mm thickness

43" / 49" / 55" / 65" / 75" / 85" / 100"

1.729 mm

930,24 mm



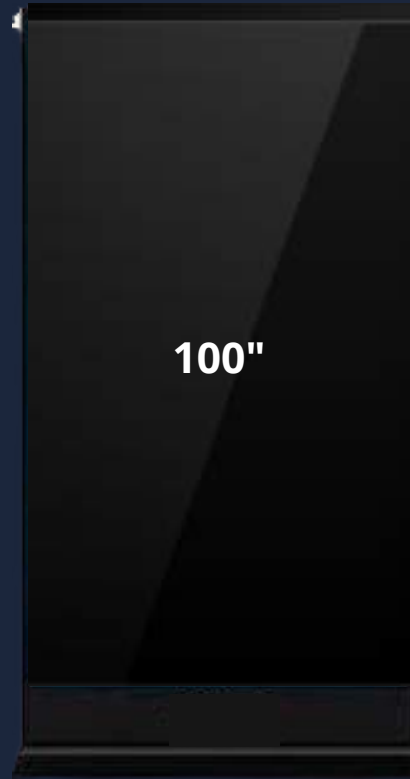
43"

523,26 mm

584 mm

2.372,2 mm

2.160,3 mm



100"

1.215,5 mm

1.275 mm



21 mm



Functional and robust design

Two standing designs available

Resistant aluminum alloy

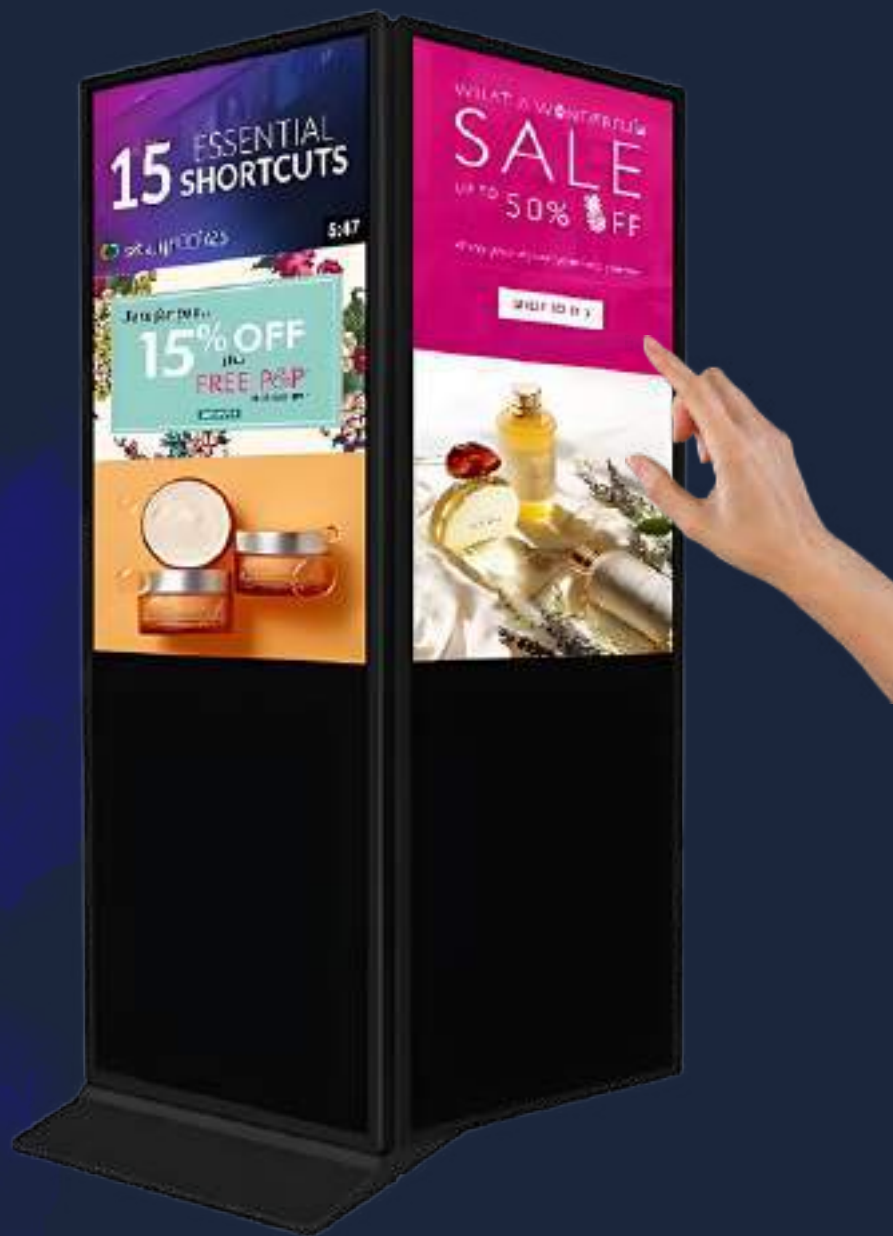
Tempered glass screen



Extra features

Optional touch function

Optional double sided



Wide viewing angle

Optimum visibility in crowded placements



178°



Intelligent split screen
Division area self adjustment



TO-I SERIES

Indoor LCD Totem



Screen Size (inch)	43	49	55	65	75	85	100
Screen Size (mm)	930,24*523,26	1.073,8*604	1.207*678	1.426,5*802,5	1.649,66*927,94	1.895,4*1.065,96	2.160,3*1.215,5
Total Size (mm)	1.729*584 TO-IP / 1.750*592,8 TO-IB	1.809*659,2	1.879*735	2.000*879	2.213,9*999,5	2.354,4*1.136,8	2.372,2*1.275
Weight (kg)	29 TO-IP / 36,2 TO-IB	44	48	65	88	108,4	
Thickness (mm)	21						
Resolution	1.920*1.080						
Brightness(nits)	350 (500 / 700 optional)						
Contrast	1000:1						
Aspect Ratio	16:9						
Colour (M)	16,7						
Response Time (ms)	8						
Viewing Angle (°)	H 178, V 178						
Touch Panel	PCAP 10 touch points						
CPU	Quad-Core, 1.8GHz						
RAM / ROM (GB)	2 / 16						
Operating System	Android 7.1 (optional Windows 10)						
Connectivity	WiFi 802.11b/g/n, Ethernet 100M, 1xMicroUSB, 2xUSB, 1xRJ45 (optional Bluetooth)						
Media Formats	Video MKV, AVI, MP4, RM/RMVB, TS, FLV, WMV; Audio MP3, WMA, MAV, AC3, FLAC; Image JPG, GIF, BMP, PNG						
Temperature (°C) / Humidity (% RH)	0 ~ 50 / 10 ~ 80						
Input Voltage	AC110~240V, 50~60Hz						
Power Consumption (W/m²)	≤100						
Life Span (hours)	50.000						
Shell Material and Colour	Metal Black, White or Customization						
Installation Method	Floor Standing						

TO-I SERIES

Indoor LCD Totem



TO-EB SERIES

Outdoor Battery LCD Totem



1080p HD

FHD quality image



IP65

High protection



1000:1

High contrast



178°

Wide viewing angle



2.000 nits

High brightness



9 hours

Long battery playtime



Standard design
Wireless and portable floor standing

Space saving
Folding design



Battery incorporated

9 hours battery playtime

No wirings



Portable
Convenient grip handle
Foldable bracket design
Industrial casters



TO-EB SERIES

Outdoor Battery LCD Totem



Screen Size (inch)	43
Screen Size (mm)	941*529
Total Size (mm)	1.236*588
Weight (kg)	38,16
Thickness (mm)	173 closed
Resolution	1.920*1.080
Brightness(nits)	2.000
Contrast	1000:1
Viewing Angle (°)	H 178, V 178
RAM / ROM (GB)	4 / 128
Operating System	I5 Windows
Connectivity	WiFi 2.4G/5G, USB, HDMI, DP, RJ45, VGA, DC IN
Media Formats	Video MKV, AVI, MP4, RM/RMVB, TS, FLV, WMV; Audio MP3, WMA, MAV, AC3, FLAC; Image JPG, GIF, BMP, PNG
Protection	IP65
Temperature (°C) / Humidity (% RH)	-20 ~70 / 10 - 80
Input Voltage	100-240V, ≤110W
Battery playtime (hours)	9
Life Span (hours)	50.000
Shell Material and Colour	Black or custom aluminum
Installation Method	Wireless portable floor standing



TO-EB SERIES

Outdoor Battery LCD Totem



TO-EM SERIES

Outdoor Mupi LCD Totem



1080p HD

FHD quality image



IP65

High protection



1200:1

High contrast



178°

Wide viewing angle



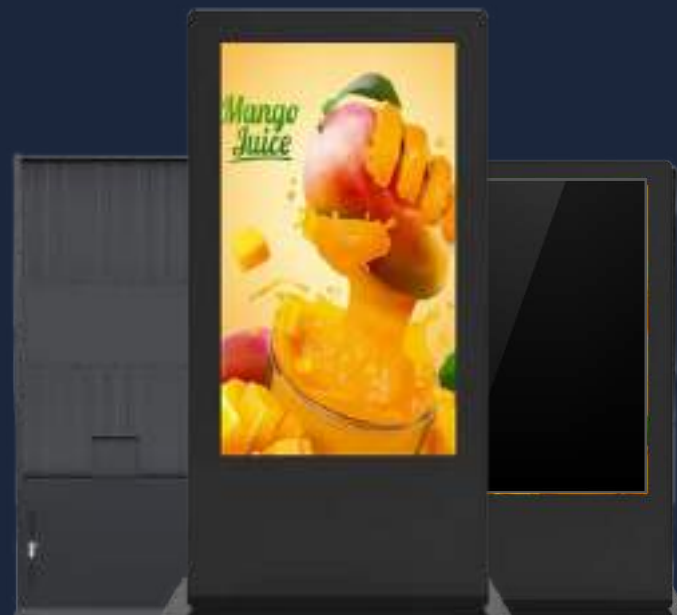
1.000-3.000 nits

High brightness



50.000 hours

Long service life



Standard design
Two available sizes



Compact screen box
150 / 220 mm



Top resistance

Waterproof, dustproof

Anti-dazzle, anti-glare, anti-reflection, anti-UV

Power coating with AR tempered glass

Cold rolled steel



-40°C



-55°C



TO-EM SERIES

Outdoor Mupi LCD Totem



Screen Size (inch)	43 (optional 49 / 55)	65 (optional 75 / 85)
Screen Size (mm)	941*529	1.428*803
Total Size (mm)	1.950*730	2.250*1.000
Thickness (mm)	220	150
Resolution	1.920*1.080	3.840*2.160
Brightness(nits)	1.000-3.000	
Contrast	1200:1	
Viewing Angle (°)	H 178, V 178	
RAM / ROM (GB)	2 / 8 Android (4 / 128 Windows)	
Operating System	Android 7.1 (optional Windows 10)	
Connectivity	WiFi, Ethernet, USB, RJ45	
Media Formats	Video MPEG, VC1, RV, etc.; Audio MP3, WMA, AAC, etc.; Image JPG, GIF, BMP, PNG	
Protection	IP65	
Temperature (°C)	-20 ~45	
Input Voltage (V/Hz)	AC208~240V, 50Hz	
Consumption (W)	280-400	
Life Span (hours)	50.000	
Shell Material and Colour	Cold rolled steel	
Installation Method	Floor Standing	

TO-EM SERIES

Outdoor Mupi LCD Totem



D SERIES

Double Sided LCD Screens

Minimum Thickness
Indoor
Double Impact



DB SERIES

Double Sided Shop Window LCD Screen



1080p HD
FHD quality image



57 mm
Ultra-thin screen



1000:1
High contrast



178°
Wide viewing angle



4.000 nits
High brightness

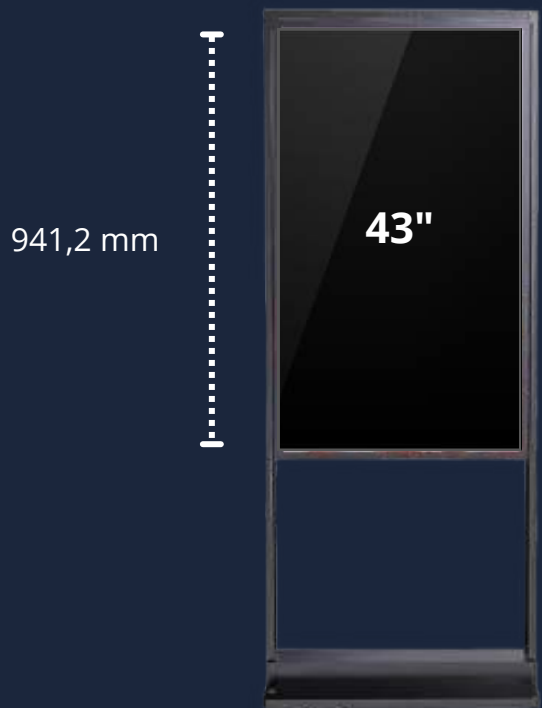


50.000 hours
Long service life



Standard design
Two available sizes

Ultra-thin screen box
57 mm



941,2 mm

43"



529,4 mm

1.213 mm



55"



684 mm



57 mm



Flexible installation

- Single or double side optional
- Adjustable height
- Optional wheels
- Hanging or floor standing



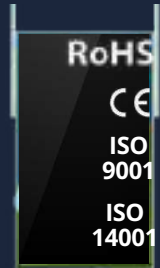
Dual brightness

- 4,000 nits window side & 700 nits back
- Automatic brightness control
- Energy saving



DB SERIES

Double Sided Shop Window LCD Screen



Screen Size (inch)	43	55
Screen Size (mm)	941,2 x 529,4	1.213 x 684
Weight (kg)	29	
Thickness (mm)	57	
Resolution	1.920 x 1.080	
Brightness(nits)	4.000 & 700	
Contrast	1000:1	
Aspect Ratio	16:9	
Viewing Angle (°)	178	
RAM / ROM (GB)	4 / 128	
Operating System	I3-4130 Windows 10	
Connectivity	WiFi, 4xUSB, HDMI, RJ45, VGA	
Protection	IP45	
Temperature (°C) / Humidity (% RH)	-30 ~80 / 5 - 90	
Input Voltage	100-240V, ≤300W	
Life Span (hours)	50.000	
Shell Material and Colour	Black or custom metal	
Installation Method	Hanging or Floor Standing	

DB SERIES

Double Sided Shop Window LCD Screen



DF SERIES

Ultra-slim Hanging LCD Screen



1080p HD

FHD quality image



25,4 mm

Ultra-thin screen box



IP55

High protection



178°

Wide viewing angle



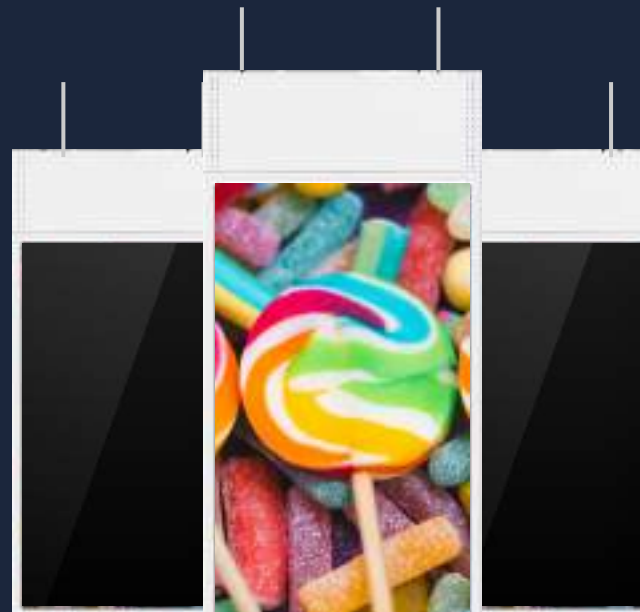
1200:1

High contrast



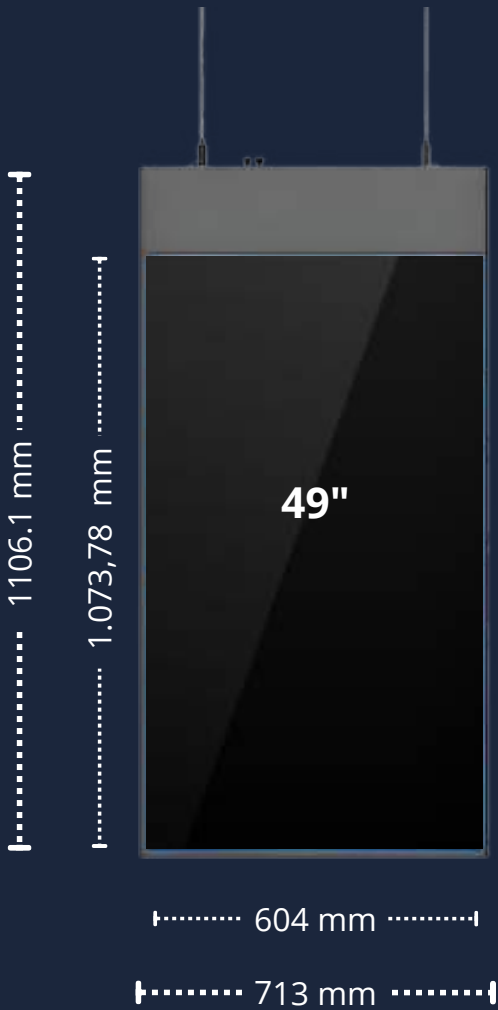
50.000 hours

Long service life



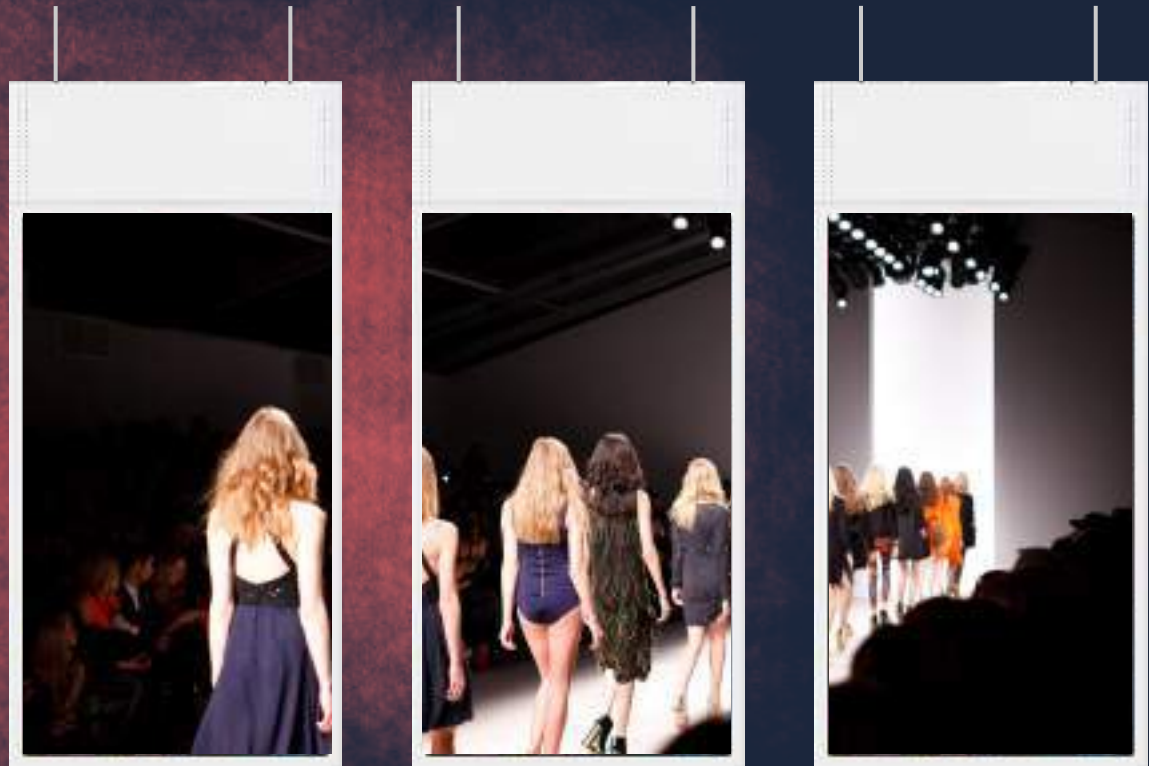
Standard design
Two screen sizes

Ultra-slim design
25,4 mm thickness





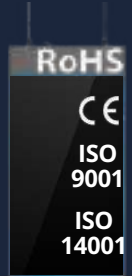
Convenient hanging design
Integrated ceiling mount
Thinner than a pen
Super lightweight



Multi monitors display
Expandible content

DF SERIES

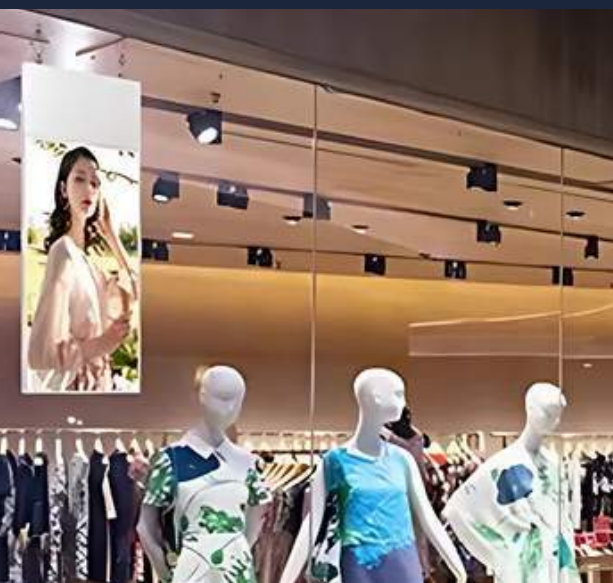
Ultra-slim Hanging LCD Screen



Screen Size (inch)	49	55
Screen Size (mm)	1073.78*604	1209,6*680,4
Total Size (mm)	1106.1*713	1475,5*736
Weight (kg)	29	40
Thickness (mm)	25,4	
Resolution	1.920*1.080	
Brightness(nits)	700	
Contrast	1200:1	
Viewing Angle (°)	H 178, V 178	
Operating System	PK3288 Android 9.0	
Connectivity	WiFi, Ethernet	
Temperature (°C) / Humidity (% RH)	-0 ~40 / 5 - 90	
Input Voltage (V/Hz)	100-240V, 50-60Hz	
Consumption (W)	≤180	≤280
Life Span (hours)	50.000	
Shell Material and Colour	White or Customized Metal	
Installation Method	Hanging	

DF SERIES

Ultra-slim Hanging LCD Screen



B SERIES

High Brightness LCD Displays

Top Brightness
Indoor

FHD/4K Quality Image



BB SERIES

High Brightness LCD Display



1080p HD
FHD quality image



2.000-3.000 nits
High brightness



35 mm
Ultra-thin box



178°
Wide viewing angle



1200:1
High contrast



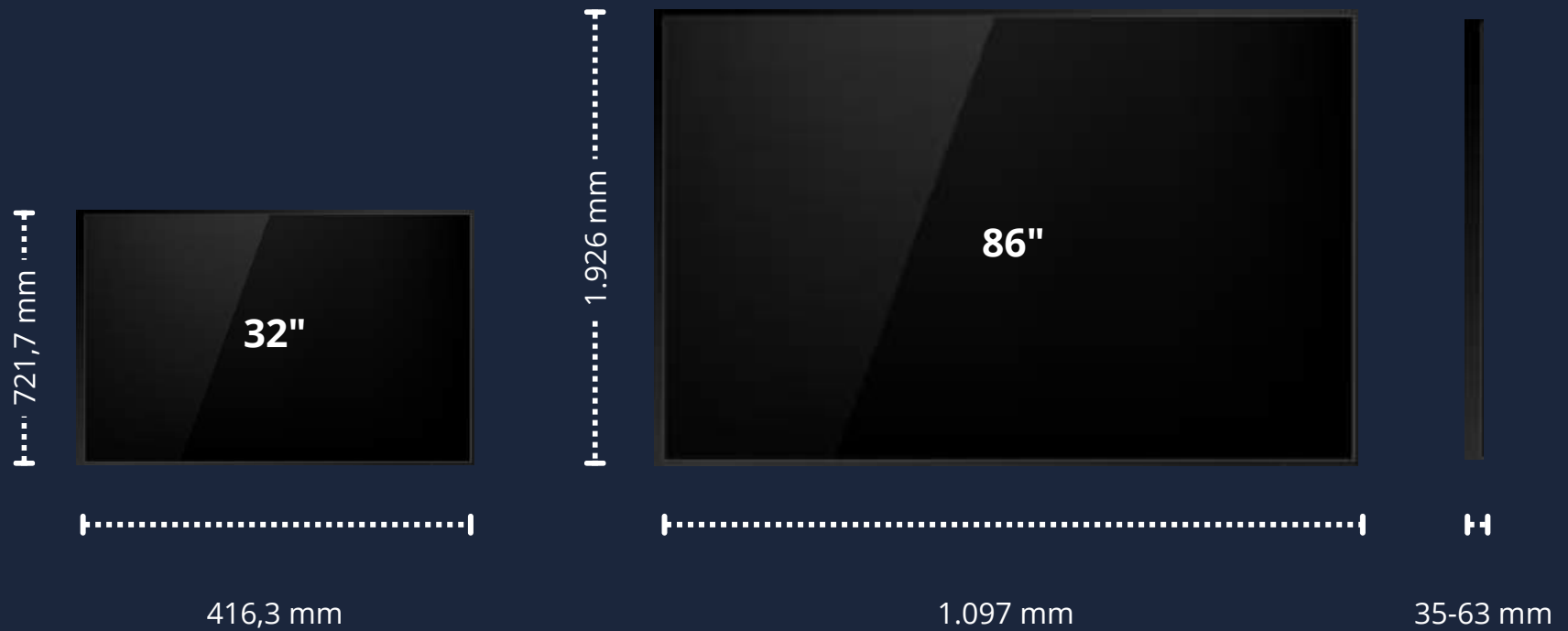
50.000 hours
Long service life



Variety of sizes
32 to 86"

Ultra-thin screen
35 mm the thinnest

32" / 43" / 49" / 55" / 65" / 75" / 86"



Top brightness

Up to 3.000 nits

Bright control sensor

Easily readable

Ideal for menu boards

Smart design

12 mm super narrow bezel

Hidden wiring duct design

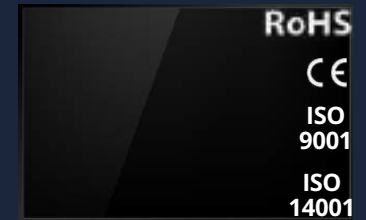
35 mm thinnest screen box

Wall mounted, hanging or floor standing installation



BB SERIES

High Brightness LCD Display



Screen Size (inch)	32	43	49	55	65	75	86
Screen Size (mm)	721,7 x 416,3	962,8 x 550,8	1095,8 x 625	1120,8 x 701,8	1449,8 x 824,8	1679 x 958	1926 x 1097
Weight (kg)	6,8	16,6	26	23,6	32,1	39,2	42,4
Thickness (mm)	57,2		35	57,2		63,2	
Resolution	1.920 x 1.080			3.840 x 2.160			
Brightness(nits)	2.000			3.000			
Contrast	1200:1						
Aspect Ratio	16:9						
Viewing Angle (°)	178						
RAM / ROM (GB)	2 / 16						
Operating System	Android 5:1						
Connectivity	WiFi 2.4G/5, RJ45						
Temperature (°C) / Humidity (% RH)	-10 ~50 / 20 - 80						
Input Voltage	100-240						
Consumption (W)	≤ 100	≤ 180	≤ 250	≤ 320	≤ 350	≤ 420	≤ 780
Life Span (hours)	50.000						
Shell Material and Colour	Black Metal						
Installation Method	Open framne / Wall mount / Hanging						

BB SERIES

High Brightness LCD Display



BP SERIES

Pure Plane Indoor LCD Display



FHD / 4K

Top quality image



1.500 nits

High brightness



35 mm

Extra plane box



178°

Wide viewing angle



1500:1

High contrast



30.000 hours

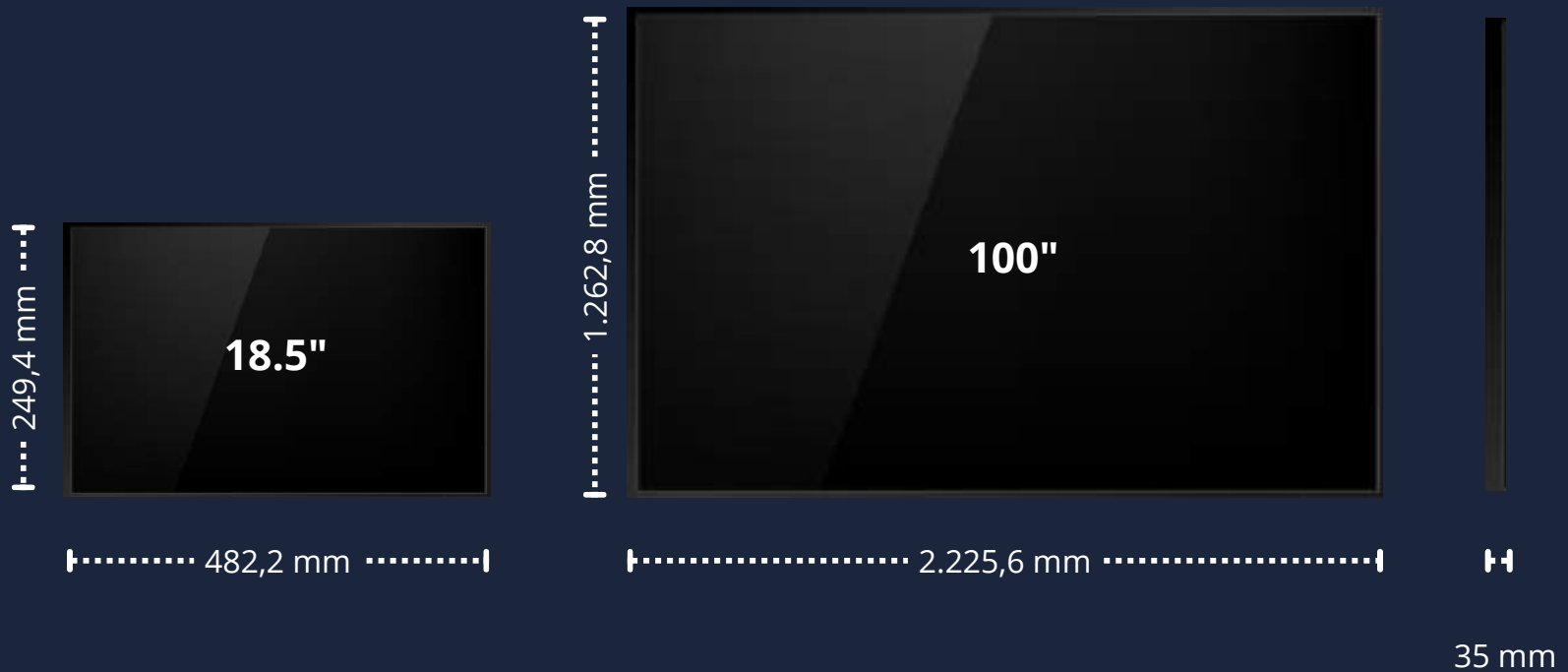
Long service life



Widest sizes range
18.5 to 100"

Ultra-thin screen
35 mm the thinnest

18.5" / 21.5" / 23.5" / 27" / 29" / 32" / 40" / 43" / 50" / 55" / 65" / 75" / 85" / 100"



Extra plane design

8 mm invisible bezel

Hidden wiring duct design

35 mm screen box

Wall hanging installation



High brightness

Up to 1.500 nits

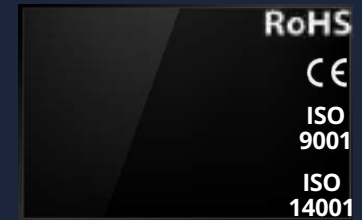
Bright control light sensor

Easily readable



BP SERIES

Pure Plane Indoor LCD Display



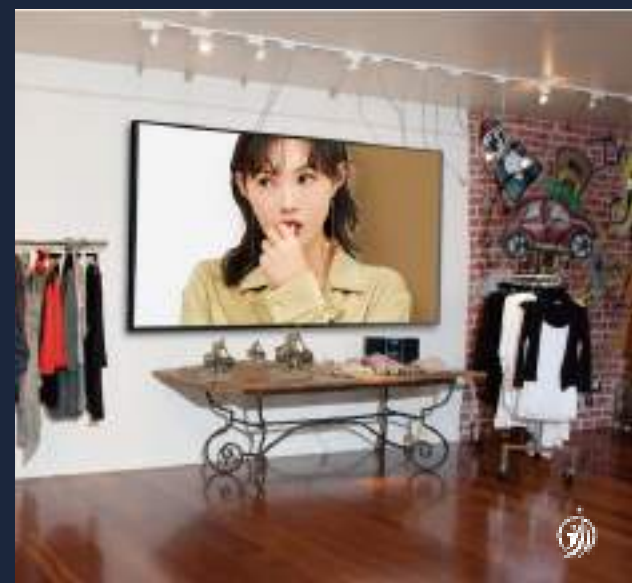
Screen Size (inch)*	18.5	43	55	65	100
Screen Size (mm)	428,2*249,4	959,3*549,2	1.227,2*699,2	1.446,2*803,52	1.446,2*803,52
Weight (kg)		16,5	23	35	
Thickness (mm)	35				
Resolution	1.920*1.080 / 3.840*2.160				
Brightness(nits)	300 / 500 / 700 / 1.000 / 1.500				
Contrast	1500:1				
Aspect Ratio	16:9				
Viewing Angle (°)	H 178, V 178				
RAM / ROM (GB)	2 / 16 (4 / 32 optional)				
Operating System	Cortex-A17+GPU Mail-T764 Android7.1/9.0				
Audio frequency output	5W*2				
Connectivity	4G, cable de red, WIFI, Bluetooth 4.0, HDMI, LAN/RJ45, TF, 2*USB				
Input Voltage	100-240V, 50-60 Hz				
Consumption (W)	≤89W				
Life Span (hours)	>30.000				
Shell Colour	Silver, Black				
Installation Method	Wall hanging				

*Also available: 21.5" / 23.5" / 27" / 29" / 32" / 40" / 50" / 75" / 85"



BP SERIES

Pure Plane Indoor LCD Display



W SERIES

Wall Mounted Outdoor LCD Displays

**High Brightness
Outdoor
Top Resistance**



W SERIES

Wall Mounted Outdoor LCD Display



1080p HD
FHD quality image



Up to 4.000 nits
High brightness



IP65
High protection



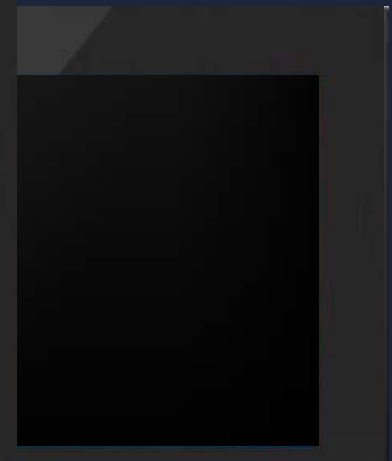
178°
Wide viewing angle



1200:1
High contrast



50.000 hours
Long service life



Two standard sizes and more optional

32 to 86"

Two screen modes available

horizontal and vertical display





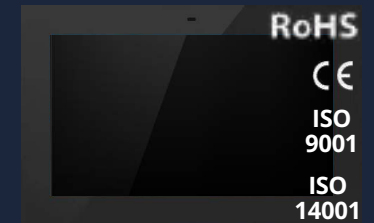
Automatic brightness
Intelligent light sensor
Energy saving
Environment protection



High resistance
Explosion proof glass
High temperature protection
Long life-span

W SERIES

Wall Mounted Outdoor LCD Display



Screen Size (inch)	21,5 (optional 24/32/43/49)	55 (optional 65/75/85/98)
Screen Size (mm)	520*670	950*1.400
Total Size (mm)	598*112	1.209*680
Weight (kg)	48	
Thickness (mm)	110	
Resolution	1.920*1.080	3840*2160
Brightness(nits)	1.000-3.000	1.000-4.000
Contrast	1200:1	
Aspect Ratio	16:9	
Viewing Angle (°)	H 178, V 178	
RAM / ROM (GB)	2 / 8 Android (4 / 128 Windows)	
Operating System	Android 7.1 (optional Windows 10)	
Connectivity	WiFi, ethernet, 2xUSB, HDMI, RJ45	
Protection	IP65	
Temperature (°C) / Humidity (% RH)	-20 ~45 / 10 ~80	
Input Voltage (V/Hz)	AC208-240V, 50~60Hz	
Life Span (hours)	50.000	
Shell Material and Colour	Black / White / Custom metal and aluminum	
Installation Method	Wall mounted	

W SERIES

Wall Mounted Outdoor LCD Display



K SERIES

Self-service LCD Kiosks

Multi Touch
Indoor and Outdoor
FHD



KP SERIES

Self-payment LCD Kiosk



1080p HD
FHD quality image



10 touch points
Sensitive and fast



Compact design
Slim and lightweight



178°
Wide viewing angle



1000:1
High contrast



50.000 hours
Long service life



Functional design

Wall mounted, desktop or floor standing



User friendly

- Simple ordering steps
- QR / barcode scanner
- Built-in speaker

Easy maintenance

- Thermal printer with easy paper replacement
- Security locks



KP SERIES

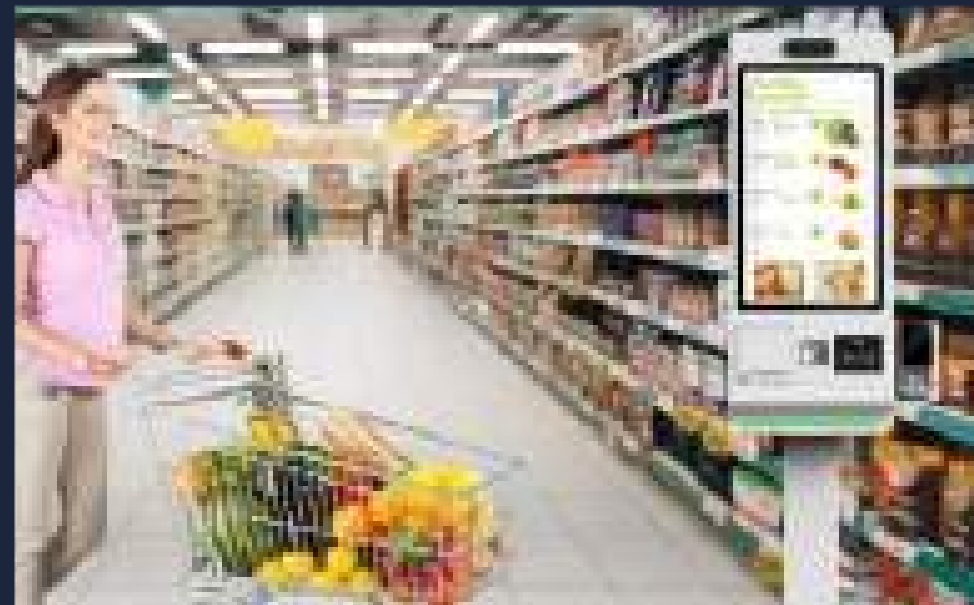
Self-payment LCD Kiosk



Screen Size (inch)	23,8	32
Screen Size (mm)	257,04 x 296,46	698,4 x 392, 85
Total Size (mm)	890 x 358	1.163,27 x 495
Weight (kg)	16,5	
Thickness (mm)	58	50
Resolution	1920x1080	
Brightness(nits)	250	
Contrast	1000:1	
Viewing Angle (°)	H 178, V 178	
RAM / ROM (GB)	2 / 8	
Operating System	RK3288 QuadCore 1.8GHzAndroid 7.0	
Connectivity	WiFi, cable de red, 2xUSB, RJ45	
Temperature (°C) / Humidity (% RH)	-0 ~50 / 10 ~80	
Input Voltage (V/Hz)	AC 100V~220V	
Consumption (W)	45	55
Life Span (hours)	50.000	
Shell and Cover Material	Black / White / Custom metal and 3mm tempered glass	
Installation Method	Wall mounted, desktop or floor standing	

KP SERIES

Self-payment LCD Kiosk



KC SERIES

Self-service drive through LCD Kiosk



1080p HD

FHD quality image



2.000 nits

High brightness



IP55

High protection



178°

Wide viewing angle



1200:1

High contrast



50.000 hours

Long service life



Dual screen
TFT and LCD 55"





178°



Maximum stability and resistance

Waterproof, dustproof, sun and cold resistant
Strong construction withstand hurricane wind force
6 mm tempered glass

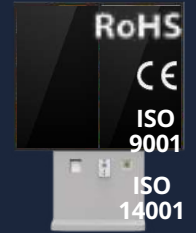
Easily readable content

High brightness
Ambient light sensor
Wide viewing angle



KC SERIES

Self-service drive through LCD Kiosk



Screen Size (inch)	2x55
Screen Size (mm)	1,210 x 1,410
Total Size (mm)	1,940 x 1,492
Thickness (mm)	250
Resolution	1,920 x 1,080
Brightness(nits)	2,000
Contrast	1200:1
Viewing Angle (°)	H 178, V 178
RAM / ROM (GB)	4 / 128
Operating System	I3 Windows 10
Connectivity	WiFi, ethernet, 4xUSB
Protection	IP55
Temperature (°C) / Humidity (% RH)	-0 ~50 / 5 - 90
Input Voltage (V/Hz)	100-240V
Consumption (W)	750
Life Span (hours)	30,000
Shell and Cover Material	Metal and 6mm tempered glass
Installation Method	Vertical

KC SERIES

Self-service drive through LCD Kiosk



PO SERIES

POS Terminal Touch Screens with Dual Display

**Dual Screen
Indoor
Customer Interface**



PO SERIES

POS Terminal Touch Screen with Dual Display



HDMI, USB, LAN...
Flexible connectivity



10 touch points
Sensitive and fast



Smart design
Simple free bezel



45-135°
Adjustable screen angle



All-in-one
Built-in printer

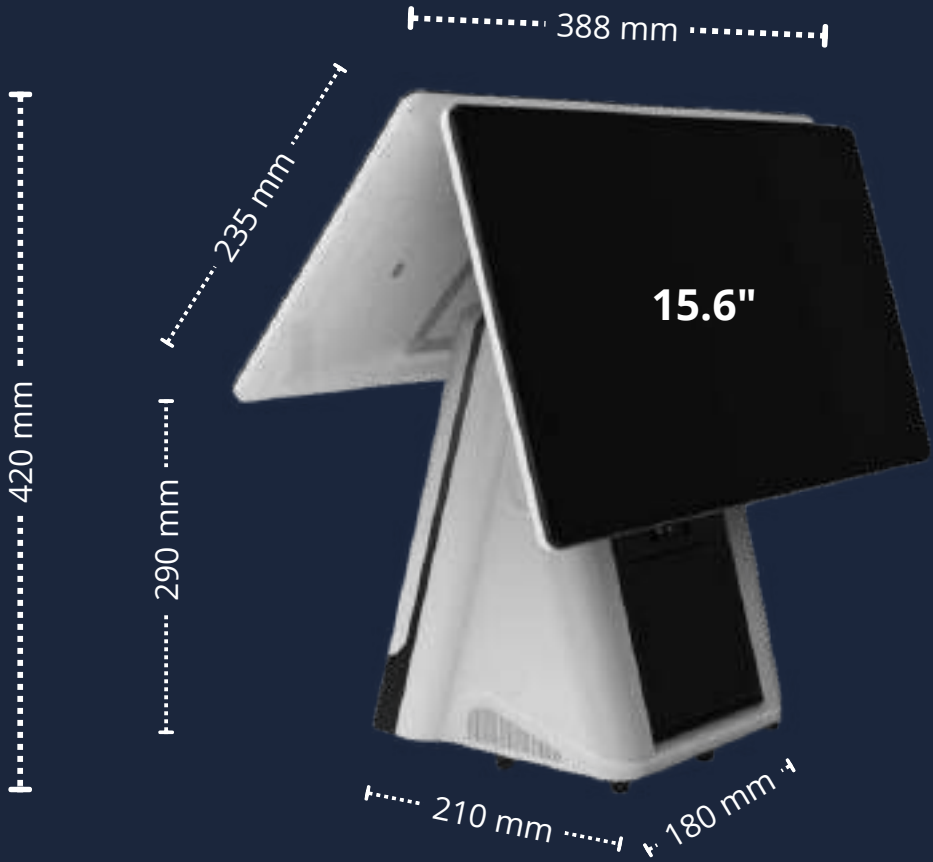


Versatile system
i5 Windows 10



Compact desktop design

Adjustable screen angles



User friendly

- Windows 10
- Flexible connectivity
- Built-in speaker
- Thermal printer



Smart and practice design

- Adjustable screen angle
- Versatile style
- 3 colors available



PO SERIES

POS Terminal Touch Screen with Dual Display



Screen Size (inch)	2x15.6
Screen Size (mm)	256,125 x 144
Total Size (mm)	420 x 388
Weight (kg)	8,9
Thickness (mm)	210 base
Resolution	1.366 x 768
Brightness(nits)	250
Contrast	500:1
Viewing Angle (°)	45/45/20/40 (CR≥10)
RAM / ROM (GB)	8 / 256
Operating System	I5 Windows 10
Connectivity	HDMI, VGA, LAN, HDME/EDP dual, 6*USB3.1+4*USB2.0. Network Card Gigabit Realtek RTL8111 Admits 3 screens output (synchronous/ asynchronous) and WiFi + Bluetooth extension, 3G/4G 1 * SIM
Touch function	10 touch points / 10 ms response time / > 85% transmittance
Camera / Speakers	2MP supports facial recognition / 2
External Card Reader	VISA
Temperature (°C) / Humidity (% RH)	0 -40 / < 80
Input Voltage (V/Hz)	12V / 8A
Material and Colour	White / Black / Silver Aluminum and Metal
Installation Method	Desktop

PO SERIES

POS Terminal Touch Screen with Dual Display



RE SERIES

Retail LCD Panels

Shapes Variety
Indoor
High Visibility



RE-C SERIES

Square LCD Panel



WiFi, Bluetooth, USB...
Flexible connectivity



< 2 mm
Thinnest frame



21,8 mm
Ultra-thin



178°
Wide viewing angle



1000:1
High contrast



50.000 hours
Long service life



Smart Design
Two available sizes

412,56 mm



22"



412,56 mm

596.16 mm



33"



596.16 mm

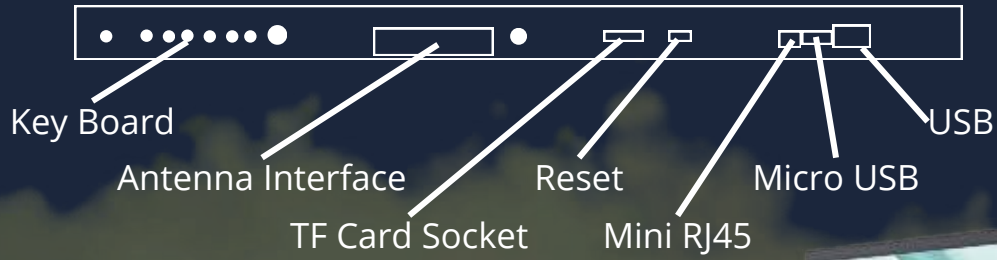


21,8 mm





Flexible connectivity
Seamless integration
Multiple ports



Ultra slim design
Sleek and modern profile
Ideal for any space



RE-C SERIES

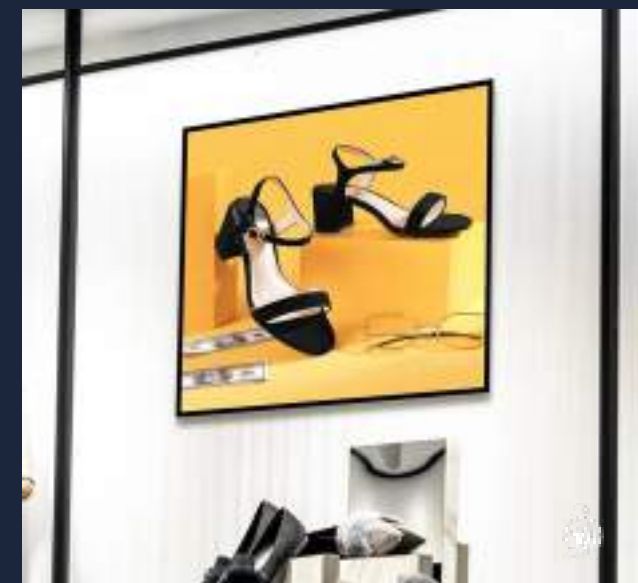
Square LCD Panel



Screen Size (inch)	22	33
Screen Size (mm)	412,56*412,56	596.16*596.16
Total Size (mm)	394,56*394,56	615,96*615,96
Weight (kg)	9,5	
Thickness (mm)	21,8	
Resolution	1.920*1.920	
Brightness(nits)	500	
Contrast	1000:1	
Viewing Angle (°)	H 178, V 178	
RAM / ROM (GB)	1 / 8 .	
Operating System	S700 QuadCore A53 Android 5.1	
Connectivity	WiFi, ethernet, 2xUSB, RJ45, Bluetooth	
Temperature (°C) / Humidity (% RH)	-0 ~50 / 10 ~80	
Input Voltage (V/Hz)	DC 12V	
Consumption (W)	35	60
Life Span (hours)	50.000	
Shell and Cover Material	Black / Custom Metal	
Installation Method	Wall mounted	

RE-C SERIES

Square LCD Panel



RE-R SERIES

Round LCD Panel



WiFi, Bluetooth, USB...
Flexible connectivity



0,4 kg
Super lightweight



15,5 mm
Ultra-thin



178°
Wide viewing angle



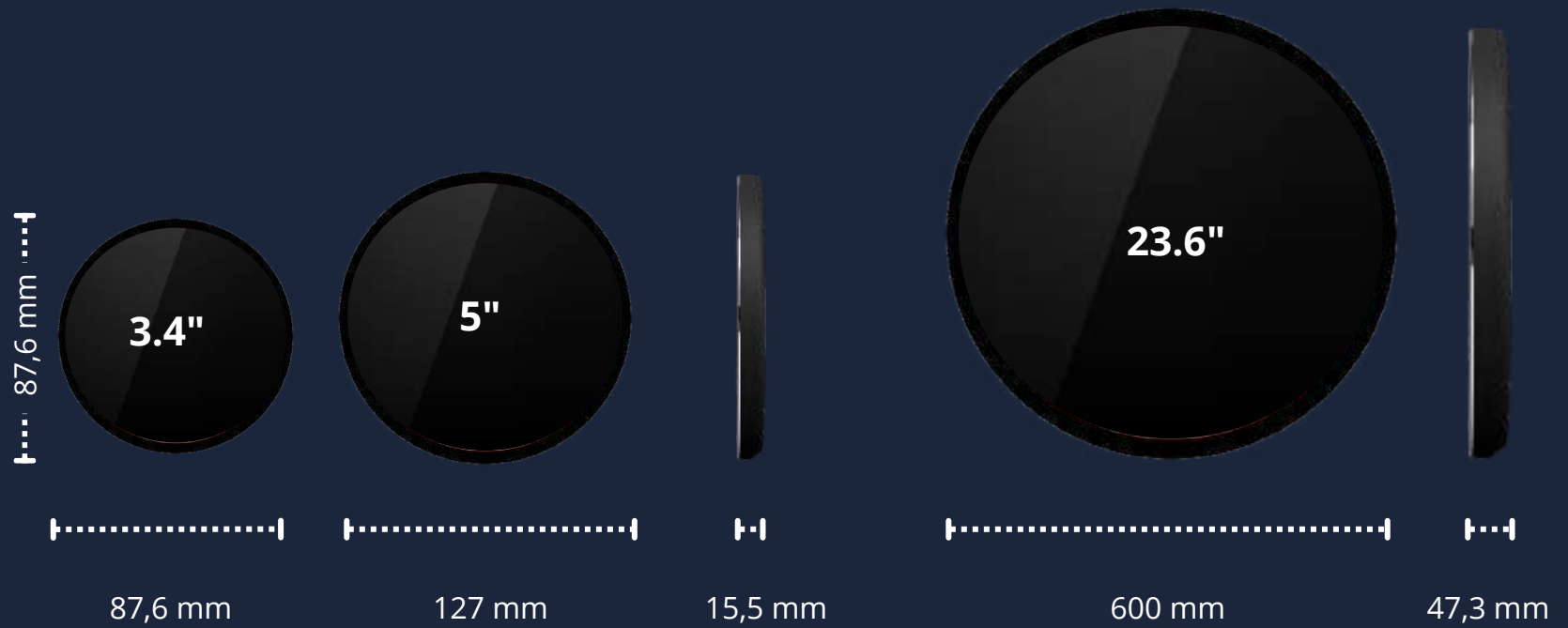
1000:1
High contrast



50.000 hours
Long service life



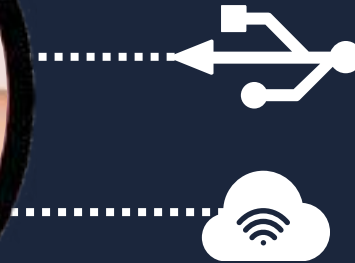
Convenient Design
Three available sizes



Multiple playback modes

USB / network and signal playback

Auto switching settings



Functional and smart

Convenient operation

Esthetic appeal

Stable and reliable system



RE-R SERIES

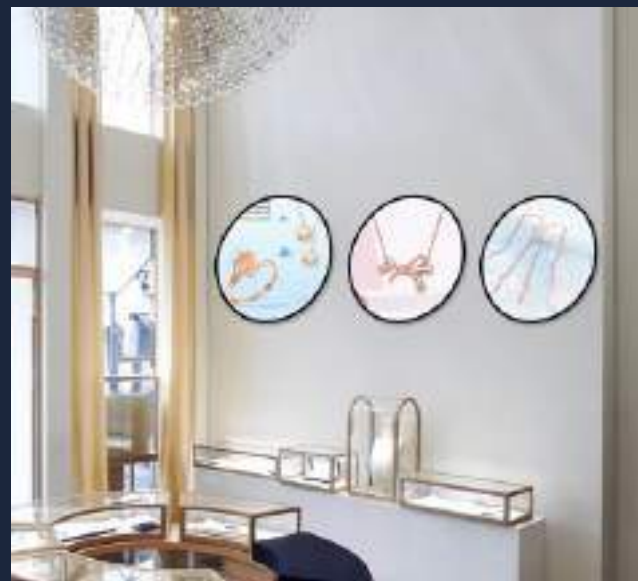
Round LCD Panel



Screen Size (inch)	23,6	5	3,4
Screen Size (mm)	600*600	127*127	87,6*87,6
Total Size (mm)	662,6*662,6	150,5*150,5	106*106
Weight (kg)	17	0,4	
Thickness (mm)	47,3	15,5	
Resolution	848*848	1.080*1.080	800*800
Brightness(nits)	700	250	
Contrast	1000:1		
Viewing Angle (°)	H 178, V 178		
Temperature (°C) / Humidity (% RH)	-0 ~45 / 10 ~80		
Input Voltage (V/Hz)	AC 110-240V, 50-60Hz	DC 5V 3A	
Consumption (W)	≤ 1		
Life Span (hours)	50.000		
Shell and Cover Material	Black / Custom Metal		
Installation Method	Wall mounted		

RE-R SERIES

Round LCD Panel



RE-G SERIES

Gondola Stretched LCD



WiFi, Ethernet, USB...
Flexible connectivity



24/7 hours
Non stop working



21,3 mm
Ultra-thin



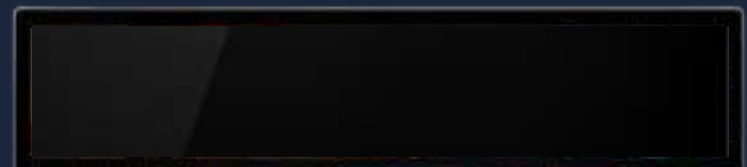
178°
Wide viewing angle



1200:1
High contrast

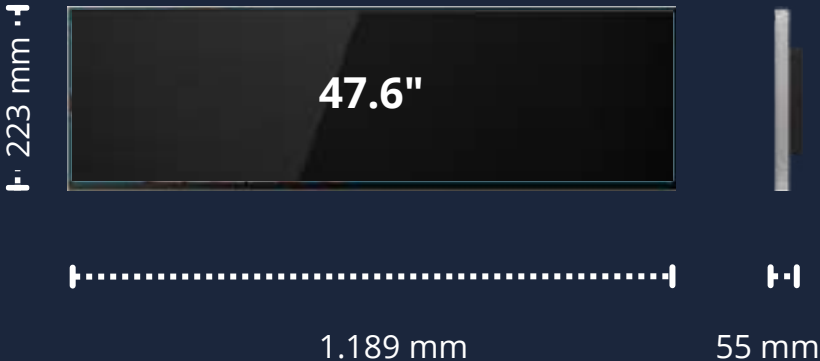
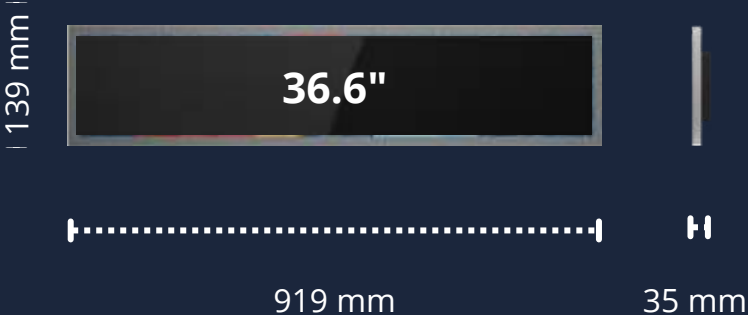
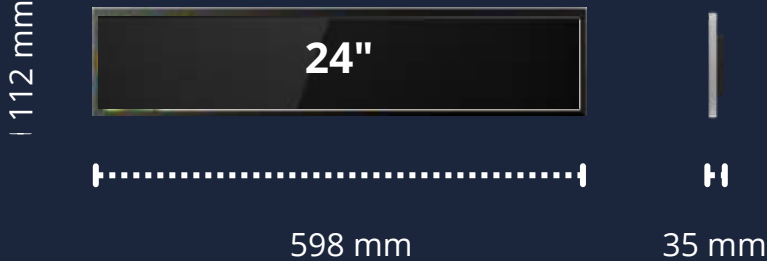
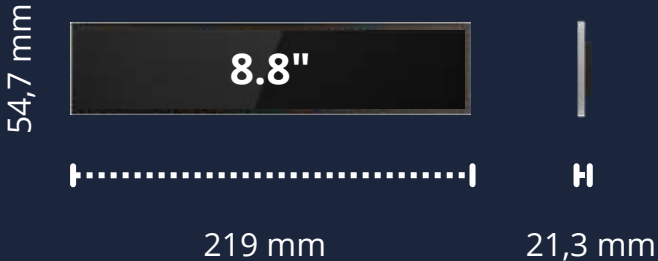


30.000 hours
Long service life



Fitting Design

Various sizes available





Timing switch
Energy saving
24/7 non stop working possible

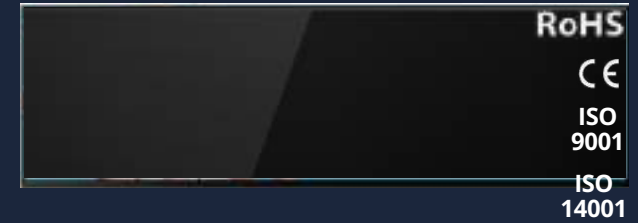


Fit different installation needs
Landscape and portrait screen
Intelligent switching



RE-G SERIES

Gondola Stretched LCD



Screen Size (inch)	8.8	24	36.6	47.6
Screen Size (mm)	219*54,7	598*112	919*139	1189*223
Total Size (mm)	238,7*67,3	616*135	960*174	1199*241,4
Weight (kg)	1	2,45	5	12,9
Thickness (mm)	21,3	35		55
Resolution	1.920*480	1.920*360	1.920*290	1.920*360
Brightness(nits)	600	300	700	
Contrast	800:1	1000:1	1200:1	
Viewing Angle (°)	H 178, V 178			
RAM / ROM (GB)	1 / 8 .			2 / 8 .
Operating System	RK3128 Android 5.1	S500 ARM Cortex A9 Android 5.1		All Winner Cortex A9 Android 5.1
Connectivity	WiFi, ethernet, USB			
Temperature (°C) / Humidity (% RH)	-0 ~50 / 20 ~80			
Input Voltage (V/Hz)	DC 12V	AC100-230V, 50-60Hz		
Consumption (W)	10	28	36	65
Life Span (hours)	30.000			
Shell and Cover Material	Black Metal			
Installation Method	Gondola or wall mounted			

RE-G SERIES

Gondola Stretched LCD



RE-D SERIES

Desktop LCD Display



WiFi, HDMI, USB...
Flexible connectivity



24/7 hours
Non stop working



16,7 mm
Ultra-thin



178°
Wide viewing angle



4000:1
High contrast



30.000 hours
Long service life



Simple Design
Flexible placement
Slim screen box

296,5 mm



527 mm

16,7 mm



Multiple applications

Menu Board

Pricing List

Product Poster

Advertising Display



Timing switch

24/7 non stop working possible

Energy saving

Contents subject to the time



Easy locking

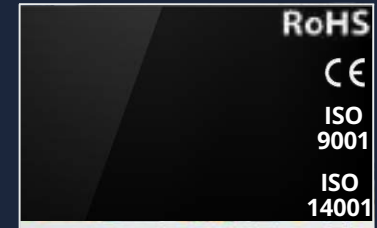
Intelligent protection

Prevent public operations



RE-D SERIES

Desktop LCD Display



Screen Size (inch)	23.8
Screen Size (mm)	527*296,5
Total Size (mm)	542,5*311,9
Weight (kg)	4,4
Thickness (mm)	16,7
Resolution	1.920*1.080
Brightness(nits)	500
Contrast	4000:1
Viewing Angle (°)	H 178, V 178
RAM / ROM (GB)	2 / 32.
Operating System	Android 11
Connectivity	WiFi, RJ45, HDMI, 2xUSB
Temperature (°C) / Humidity (% RH)	0-60
Input Voltage (V/Hz)	AC220V, 50-60Hz
Life Span (hours)	30.000
Shell and Cover Material	Metal / White
Installation Method	Desktop

RE-D SERIES

Desktop LCD Display



RE-M SERIES

Smart LCD Mirror



4K UHD
High resolution



WiFi, HDMI, USB...
Flexible connectivity



6 sizes
Various designs



178°
Wide viewing angle



3000:1
High contrast



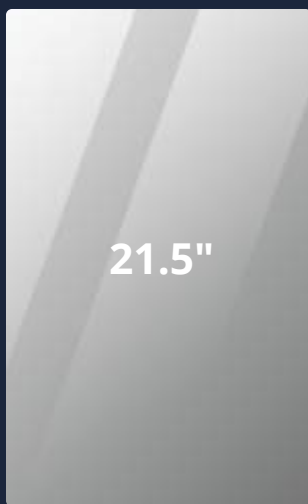
60.000 hours
Long service life



Versatile Design
Wide sizes range

21.5" / 32" / 43" / 49" / 55" / 65"

476,1 mm

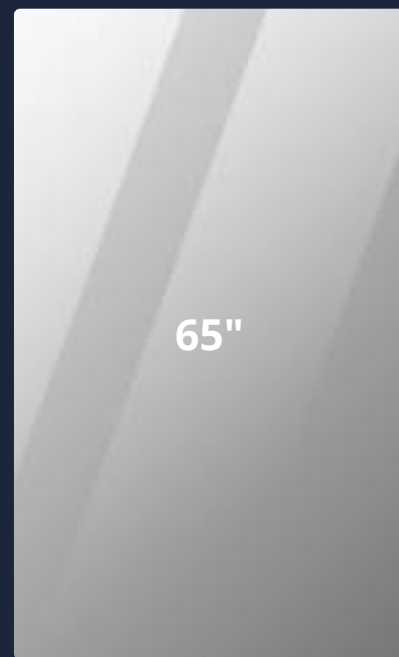


21.5"



267,8 mm

1.615,5 mm



65"



892,5mm

Interactive magic mirror

Sensitive multi-touch

Quick response

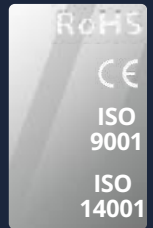


Cloud system
CMS multi terminal management
Remote control



RE-M SERIES

Smart LCD Mirror



Screen Size (inch)	21.5	32	43	49	55	65
Screen Size (mm)	476,1*267,8	698,4*392,85				
Total Size (mm)	545*336	772,4*466,85				
Weight (kg)	7,5	11,5				
Thickness (mm)	52,3	71,1				
Resolution	1920*1080			3840*2160		
Brigtness(nits)	500	700		1000	1500	
Contrast	3000:1					
Viewing Angle (°)	H 178, V 178					
RAM / ROM (GB)	1 / 8					
Operating System	QuadCore 1.3G Android 7.1					
Connectivity	WiFi, cable de red, 2xUSB, RJ45, HDMI					
Temperature (°C) / Humidity (% RH)	-0 ~50 / 10 ~80					
Input Voltage (V/Hz)	AC100-230V, 50-60Hz					
Consumption (W)	40	165	175	215	210	268
Life Span (hours)	60.000					
Shell and Cover Material	Black Metal					
Installation Method	Wall mounted					

RE-M SERIES

Smart LCD Mirror



M SERIES

Interactive Office LCD Displays

All-in-one Solution
Responsive Experience
Optimum Usability



M SERIES

Interactive Office LCD Display



4K UHD
High resolution



10 touch points
Sensitive and fast



8 speakers
High quality sound



178°
Wide viewing angle



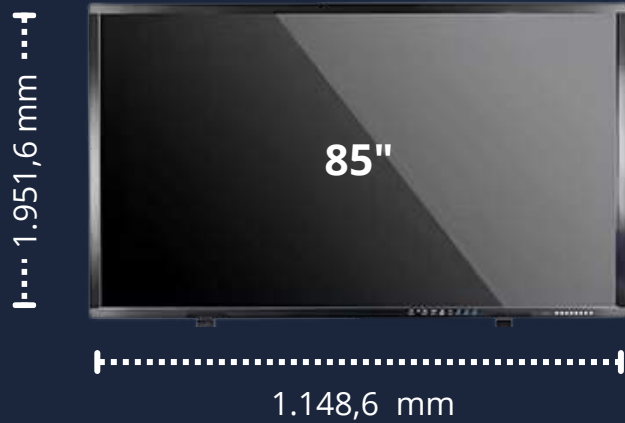
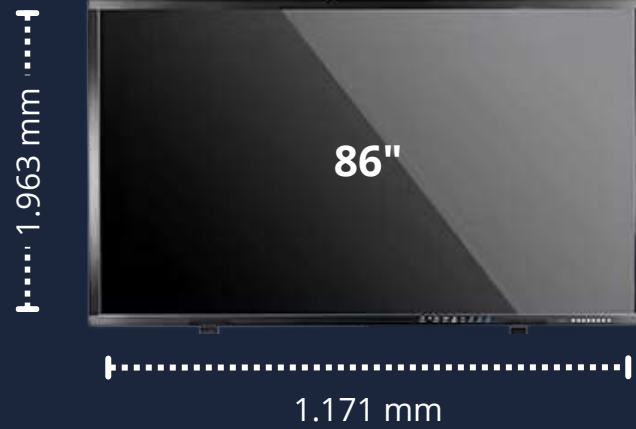
500:1
High contrast



60.000 hours
Long service life



Smart Design
Three available sizes
Optional custer support



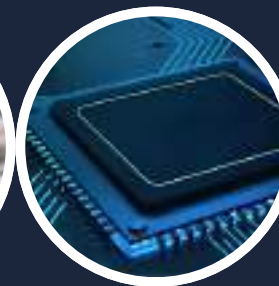


All-in-one solution

Electronic whiteboard

Wireless transmission screen

Remote video conference



M SERIES

Interactive Office LCD Display



Screen Size (inch)	75 / 86	75 / 85	75 / 86
Size (mm)	1.705,4 x 1.020 / 1.963 x 1.171	1.705,4 x 1.020 / 1.951,6 x 1.148,6	1.705,4 x 1.020 / 1.963 x 1.171
Weight (kg)	50 / 65		
Thickness (mm)	91,8		
Resolution (pixels)	4K UHD (3840 × 2160)		
Brightness (nits)	400		
Refresh Rate (Hz)	60		
Incorporated camera (W)	1300	4800	
Microphones	8		
Operating System	Android 11.0	Android 12.0	Android 13.0 con NFC
Projector	Infrared anti-reflection touch screen		
Memory	4G + 32G	8G + 128G	8G + 64G
Temperature (°C) / Humidity (% RH)	0 - 45 / 5 - 90		
Input Voltage	100-250V / 50-60Hz		
Life Span (hours)	> 60.000		
Installation Method	Caster support or wall mounted		

M SERIES

Interactive Office LCD Display





www.pantallasledlearoy.com

C/ Valdeon 24 - 28947 Fuenlabrada, Madrid (Spain)
+34 620 411 079 / +34 91 615 89 81
contacto@learoyled.com

